

Interactive Homeless Map

SANTA BARBARA COUNTY-GOLETA TO SUMMERLAND, 20 MILE SURVEY

PRESENTED BY HARRY RABIN

Heal the Ocean Board Advisor & Researcher

Documentary Filmmaker



GLIMPSE OF THE PROBLEMS

COVID 19

The continued spread of Covid-19 is a REAL THREAT from a population that continues to go unchecked.

ENVIRONMENT

The unchecked growth of the homeless populations and locations pose a continuous threat to our environment. The spread of bacteria from trash and human waste materials, that do accompany these sites, will make their way into our creeks, streams, ocean and other sensitive environments.

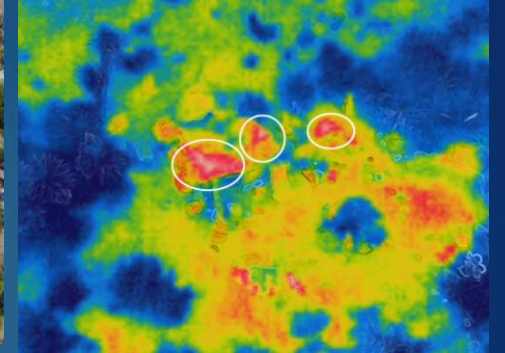
FIRE The danger of fire is clearly another threat from these sites. We have witnessed this several times over the last 10 months alone in our county and surrounding areas.

CRIME Public nuisance, theft of property often observed in the vicinity of homeless sites.



Data Collection Methods

- Aerial drone surveys using dual camera systems that cover both visible and infrared spectrum.
- On site walking surveys.
- 95% of all sites surveyed were based on a grid system covering freeway, train track and coastal areas spanning 20 miles.



Video removed to keep file size under 25mb. If you want the video in the slide presentation email request to:

harryrabin@healtheocean.org

Video removed to keep file size under 25mb.



FROM CLIFF SIDE TO ELABORATE MINI COMMUNITIES WITH APPLIANCES, PROPANE, FIREPLACE, STOVES...

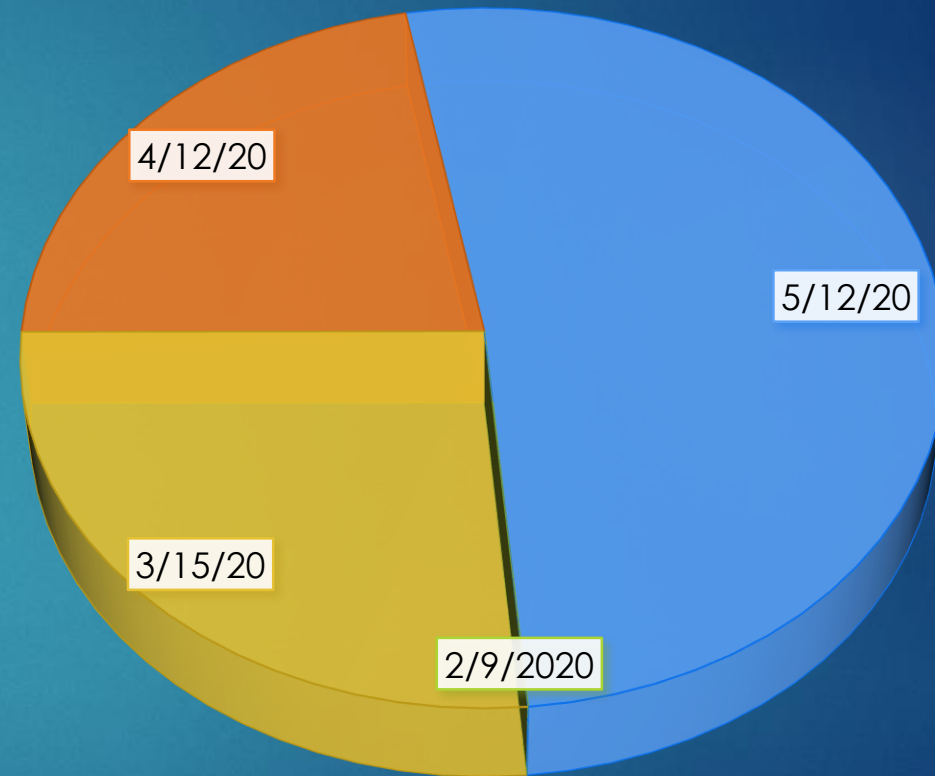
SITES

GROWTH-90 DAY PERIOD

Trend

PER/SITE OCCUPANTS and FOOTPRINT INCREASING

▶ Survey date	# of sites	Population Size	% Growth Mo. to Mo.
▶ 2/9/2020	31 SITES	≈ 56	1 st survey
▶ 3/15/2020	34 SITES	≈ 64	9.7%
▶ 4/12/2020	37 SITES	≈ 74	8.1%**
▶ 5/12/2020	44 SITES	≈ 86	18.9%



- ▶ ** Survey concluded that rainfall may have accounted for drop in growth as several sites were in low lying ravines forcing relocations.

A LOOK AT THE MAP



INTERACTIVE HOMELESS ENCAMPMENT MAP



HOW TO VIEW THE MAP

The map is a work in progress... Flexibility to create specific views such as, FIRE and ENVIRONMENTAL THREATS, HEALTH & SAFETY, CRIMINAL ACTIVITIES and more are being added. It will all be migrated onto ESRI's ArcGIS platform to allow for more demographics and universal access.

- Download [Google Earth Pro](#), it's free. Runs on IOS, Android, Mac OSX, Windows, etc.
- Send a request for the map file to:
harryrabin@healtheocean.org

